

Meridian CUSD #223 School Board

Agenda and Board Packet

Regular Meeting

March 19, 2009

Meridian Junior High Board Room

7:00 p.m.



*“Our mission is to educate students to be self-directed learners,
collaborative workers, complex thinkers, quality producers and community
contributors”*



Mission

Our mission is to educate students to be self-directed learners, collaborative workers, complex thinkers, quality producers and community contributors.

Long Range Vision

As an exemplary School District we continually strive to:

- Engage in highly effective communication to Community, School Board, Administration, Faculty, Support Staff and Students.
- Achieve organizational trust through integrity, collaboration, reliability, accountability, transparency, fairness and loyalty.
- Utilize an aligned, well- rounded and comprehensive curriculum that focuses on life- long learning skills.
- Promote high learning expectations for all students.
- Practice visionary district leadership to create and implement district goals.
- Value and maintain a safe environment for Students, Staff and Community.
- Provide educational facilities that support and enhance the students' educational experience.
- Make decisions using research and best practice that incorporates fiscal responsibility, collaboration and impact on the Community, School Board, Staff and Students.

MERIDIAN C.U.S.D. #223
BOARD AGENDA
Thursday, March 19, 2009
Meridian Jr. High Board Room
7:00 P.M.

- 1. Call to Order**
- 2. Roll call**
- 3. Pledge of Allegiance**
- 4. Review/approve Consent Agenda** *(Items listed under the consent agenda are considered to be routine by the Board of Education and will be enacted by one motion. There will be no separate discussion of the items unless a board member or citizen requests, in which event the item will be removed from the consent agenda and considered individually.)*
 - 4.1 Approve minutes of the February 26, 2009 Board Meeting; and the March 5, 2009 Special Board Meeting
 - 4.2 Approve the payroll of March 20, 2009 and April 3, 2009
 - 4.3 Approve accounts payable for March 2009 (per review by Mrs. Barb Reeverts)
 - 4.4 Approve 2009-2010 District Calendar (Policy 2:20, #11)
 - 4.5 Approve course of study for MJH social studies department (Policy 2:20, #7)
 - 4.6 Approve Meridian Junior High School textbook adoption for social studies; and Stillman Valley High School Textbook adoption for Biology (Policy 2:20, #11)
- 5. Report of the Superintendent**
 - 5.1 Review Community Focus Group Session scheduled for Monday, April 13, 2009 at Stillman Valley High School at 7:00 p.m. (Policy 8:10)
- 6. Notices and communications**
 - 6.1 Available at the meeting
- 7. Community Input:** *(This is the time when visitors may request to address the Board of Education on any item relating to the role and function of the Board of Education. When the Board President so directs, persons should stand, give their name and address and begin their statements. Persons are asked to refrain from making any personal comments regarding any individual. The Board President reserves the right to limit presentations to five minutes.) (7:15 p.m.)*
- 8. Old Business:**
 - 8.1 Review/Approve SVHS Geometry Textbook Recommendation (Policy 2:20, #11)
 - 8.2 Establish date for School Board Organizational Meeting (Policy 2:210);
 - 8.3 Approve Meridian CUSD #223 Dashboard
 - 8.4 Review Updated Demographic and Student Growth Projections to 2020 (Policy 2:20, #6)
 - 8.5 Review Student Bus Ride Time (Policy 4:110)
 - 8.6 Review Policy Customization Process (Policy 2:240)
- 9. New Business: (8:45 p.m.)**
 - 9.1 Review Meridian CUSD #223 Maintenance Contract Renewal Process (Policy 2:20, #5)
 - 9.2 Review suggested changes to Policy 5:150: (Personnel Records)
- 10. Board Comments**
- 11. Adjourn to Closed Session to discuss: the employment, compensation, performance, and evaluation of specific employees of the District; individual student discipline cases**
- 12. Reconvene in open session**
- 13. Approve the minutes of the February 26, 2009 and March 5, 2009 executive sessions**
- 14. Action items from closed session**
- 15. Adjourn**

Meridian Community Board Minutes

Minutes of a Regular Board Meeting of February 26, 2009

Call to Order

A regular meeting of the Board of Education of Meridian Community Unit School District #223 was called to order by President Ron Steenken at 7:00 p.m. in the Meridian District Board of Education Room located in the Meridian Junior High. Members present: Bonne, Glendenning, Jagielski, Larson and Reeverts. Superintendent Prusator, Director of Business/HR Porter, Principal Mandzen, Activities Director Stewart, and Director of Transportation Sherman were also present. The Pledge of Allegiance followed.

Consent Agenda

A motion was made by Larson, seconded by Reeverts, to approve the consent agenda including the minutes of the February 12, 2009 board meeting and the February 7, 2009 special board meeting; payroll for March 6, 2009; and 2008-2009 Certified Teacher Seniority List. Ayes: Bonne, Glendenning, Jagielski, Larson, Reeverts and Steenken. Motion carried unanimously.

Superintendent's Report

Mr. Prusator reviewed the incident that occurred at Highland last Friday regarding the recovery of a .22 caliber hand pistol. He commended the staff and the Sheriff's office for their part in the investigation. Mr. Prusator also briefly reviewed the process of the investigation.

Mr. Steenken invited questions or comments from board members.

Notices and Communications

Mr. Prusator stated that a Robert's Rules of Order book was placed at the seat of each board member.

Community Input

Mike Riley, Rex McManaway, Angela Hodges, Cindy Raimer, Patti Cuchiara, and Barbara McManaway expressed concerns about the incident at Highland. Comments focused on the communication to parents, implementing gun safety programs, drills for this type of incident, the responsibility of gun owners, what actually is considered a firearm (and zero tolerance for any guns real or toy), and training for the transportation department.

Old Business

8.1 Review/plan for April 13, 2009 Community Focus Group Session

The Board began planning for the April 13, 2009 Community Focus Group Session. Discussion centered on what topics to cover at this session. Board members are asked to submit their five names of community members by next week.

8.2 Review board self-evaluation topics identified at February 7, 2009 special board meeting

Mr. Prusator reviewed the activities that the Board agreed to undertake during the February 7, 2009 special board meeting. Some of the activities included orientation for new board members; adopting

an annual agenda calendar; and working with the Illinois Association of School Boards to updating the Administrative Procedures component of the Meridian School Board Policy Manual.

8.3 Approve Board resolution opposing withdrawal of Byron CUSD #226 from the Ogle County Educational Cooperative (OCEC)

Mr. Prusator reviewed that the next step in opposing the withdrawal of Byron from the OCEC was for the board to approve the resolution. He stated that the withdrawal of Byron would disrupt the established OCEC programs. Mr. Prusator stated that all Ogle County School Boards are passing the resolution.

Motion:

A motion was made by Glendenning, seconded by Jagielski, to approve the resolution opposing the withdrawal of Byron CUSD #226 from the OCEC as presented. Ayes: Glendenning, Jagielski, Larson, Reeverts, Bonne and Steenken. Motion carried unanimously.

8.4 Review/possibly approve contract with Versa Tran routing software for transportation department

Mr. Prusator reviewed that Versa Tran routing software was a recommendation that Director of Transportation Sherman had as part of his Transportation Report at the last board meeting.

Motion:

A motion was made by Bonne, seconded by Reeverts, to approve the contract with Versa Tran in the amount of \$18,936.00. Ayes: Jagielski, Larson, Reeverts, Bonne, Glendenning and Steenken. Motion carried unanimously.

Mr. Glendenning asked that an evaluation of the program be put on the calendar for next year.

New Business

9.1 Review changes to Meridian Junior High social studies curriculum

Mr. Prusator reviewed the changes to the MJH social studies curriculum. He stated that during the year, he and the MJH and SVHS social studies teachers met to review and analyze the Illinois Learning Standards to determine the best course of study in MJH. The power point presentation highlighted the process. Mr. Wilhite then spoke on the textbooks that were reviewed and the subsequent recommendation. They were put on display.

9.2 Review/place 2009-2010 textbooks on display

Kathy McCarey and Chris Griesbach gave a power point presentation on the books that were reviewed for SVHS biology. Mr. Mandzen showed the geometry books that were reviewed. The textbooks will be put on display until the next regularly scheduled meeting on March 19, 2009.

9.3 Review Drug/Alcohol/Steroid Testing Program

Mr. Stewart reviewed options and costs for the implementation of a drug/alcohol/steroid testing program. Discussion followed which included surveying the community to gain a level of understanding for how important this topic is and how well it would be supported.

Board Comments

There were no Board Comments.

Adjourn to Closed Session

A motion was made by Reeverts, seconded by Bonne, to adjourn to closed session to discuss the appointment, employment, compensation, discipline, performance or dismissal of specific employees of the district; student discipline case; and the setting of a price for sale or lease of real property owned by the District. Motion carried unanimously. Time: 10:35 p.m.

Reconvene in Open Session

A motion was made by Bonne, seconded by Reeverts, to return to open session. Motion carried unanimously. Time: 11:17 p.m.

Board Action from Executive Session

Approve minutes of the February 12, 2009 Executive Session and the February 7, 2009 special board meeting

A motion was made by Jagielski, seconded by Reeverts, to approve the minutes of the February 12, 2009 executive session and the executive session minutes of the February 7, 2009 special board meeting. Motion carried unanimously.

Personnel Report

A motion was made by Jagielski, seconded by Larson, to approve the Personnel Report. Motion carried unanimously.

Lease of District Property

A motion was made by Steenken, seconded by Bonne, to approve the lease of District property to Glendenning Farms for the current year; the Board will bid the lease in subsequent years. Ayes: Jagielski, Larson, Reeverts, Bonne and Steenken. Abstain: Glendenning. Motion carried.

Adjourn

A motion was made by Bonne, seconded by Jagielski, to adjourn the meeting. Motion carried unanimously.

Respectfully submitted,
Donna Fruin, Secretary

Meridian Community Board Minutes

Minutes of a Special Board Meeting of March 5, 2009

Call to Order

A special meeting of the Board of Education of Meridian Community Unit School District #223 was called to order by President Ron Steenken at 6:30 p.m. in the Meridian District Board of Education Room located in the Meridian Junior High School. Members present: Bonne, Glendenning, Jagielski, King and Reeverts. Superintendent Prusator, Principal Coulahan and the District's legal counsel Debra Kaplan were also present. The Pledge of Allegiance followed.

Adjourn to closed session to discuss student disciplinary case

A motion was made by Jagielski, seconded by Bonne, to adjourn to closed session to discuss student disciplinary case. Ayes: Bonne, Glendenning, Jagielski, King, Reeverts and Steenken. Motion carried unanimously. Time: 6:34 p.m.

Mr. Larson arrived at 6:42 p.m.

Reconvene in open session

A motion was made by Bonne, seconded by Reeverts, to return to open session. Ayes: Glendenning, Jagielski, King, Larson, Reeverts, Bonne and Steenken. Motion carried unanimously. 9:50 p.m.

Action from closed session

Attorney Debra Kaplan read the Resolution Authorizing Student Disciplinary Action.

Motion:

A motion was made by King, seconded by Glendenning, to adopt the Resolution Authorizing Student Disciplinary Action as read. Ayes: Jagielski, King, Larson, Reeverts, Bonne, Glendenning and Steenken. Motion carried unanimously.

Adjourn

A motion was made by Larson, seconded by Jagielski, to adjourn the meeting. Ayes: King, Larson, Reeverts, Bonne, Glendenning, Jagielski and Steenken. Motion carried unanimously.

Respectfully submitted,

Donna Fruin, Secretary

Consent Agenda Items: 4.1; 4.2, 4.3

Consent agenda items 4.1, 4.2 and 4.3, include approving the minutes of the regularly scheduled February 26, 2009 meeting; the March 5, 2009 special meeting; the March 20, 2009 and April 3, 2009 payroll; and approving accounts payable for March (per review by Mrs. Barb Reeverts)

Consent Agenda Item: 4.4: Approve 2009-2010 District Calendar

The tentative 2009-2010 calendar was reviewed at the February 12, 2009 board meeting. As was the case previous calendars, the Byron, Oregon and Meridian School Districts collaborated to establish a common calendar to accommodate shared programs among the districts. The recommended calendar also matches the OCEC calendar.

Consent Agenda Item: 4.5: Approve course of study for MJH Social Studies Department

At the February 26, 2009 board meeting, the recommendation was made to change the courses and sequences of the Meridian MJH social studies program. After reviewing the Illinois Learning Standards; program of study from high performing districts; the SVHS social studies curriculum, the department recommended the following course of study:

6th Grade: World History

7th Grade: U.S. History to Reconstruction (1877)

8th Grade : U.S. History (Civil War to present)

Previously, geography was taught in 7th grade and a full year of U.S. History in 8th grade. 6th grade will continue to offer World History.

Consent Agenda Item: 4.6: Approve Textbook adoption for Meridian Junior High Social Studies and SVHS Biology

At the February 26, 2009 board meeting, textbooks were placed on display for adoption at this board meeting. The recommendation for MJH social studies textbooks was made following an evaluation of three potential textbooks. The SVHS science department also evaluated textbooks and presented to the School Board at the February 26, 2009 meeting. The following textbooks are being recommended:

History of Our World - The Early Ages; Prentice Hall, Copyright 2008 (6th Grade)

America: History of Our Nation (Beginnings through 1877); Prentice Hall, Copyright 2009 (7th Grade)

America: History of Our Nation (Civil War- Present); Prentice Hall, Copyright 2009 (8th Grade)

Biology; Glencoe, Copyright 2009 (SVHS Biology)

S.V.H.S. Geometry Textbook Selection

CPM Geometry Connections
Discovering Geometry
McDougal Littel Geometry

Criteria that Determined our Decision

- Covers Illinois State Standards
- Cooperative Learning Based
Research says Best Practice
- Integrates Algebra
- Integrates Reading and Writing
- Addresses Proofs in a Logical and Progressive
Manner
- Parent Resources: Internet
- Student Resources: Internet

We Chose...

CPM Geometry Connections

It covers the Illinois Learning Standards

- It is hard to find a book that does not cover the standards. Each book needs to meet the standards of all states, so that they are not excluded from a state.

Here's Why

Cooperative Learning Based

- The CPM book is completely cooperative in nature. All students learn better with cooperative learning (Johnson and Johnson).
- Easier to supplement a cooperative curriculum than the other way around.
- Discovering Geometry was a more difficult adjustment than CPM.
- McDougal Littel Geometry did little or no cooperative activities per chapter.

Integrates Algebra

- This book integrates Algebra throughout the curriculum. This provides a continuation of skills from Algebra to Algebra II while students are in Geometry.
- Discovering Geometry did not provide this consistent integration.
- McDougal Littel Geometry did provide the integration, but was deficient in other areas.

Integrates Reading and Writing

- State testing relies heavily on a student's ability to read and interpret long mathematical problems. Reading and writing contribute to an individual's ability to read and interpret these situations.
- The CPM book requires reading daily and writing on a weekly basis. Tested reading level of this book is 8.3.
- Discovering Geometry did require minimal reading.
- McDougal Littel did not require any reading.

Addresses Proofs in a Logical and Progressive Manner

- CPM works through the ideas of proofs in a progressive way. The authors start at the beginning with logical arguments and work toward two-column proofs.
- Discovering Geometry also works through proofs progressively.
- McDougal Littel has two chapters set aside for proofs.

Parent Resources: Internet

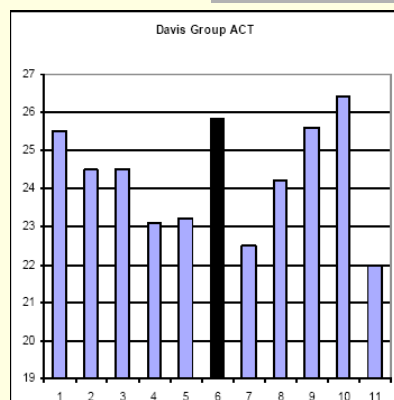
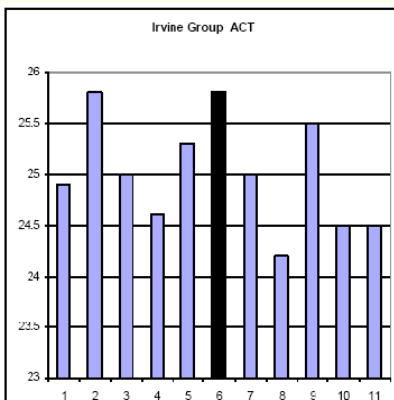
- CPM had a specific parent resource link that provides enrichment activities parents may access for their students.
- Neither Discovering Geometry nor McDougal Littel had a specific link for parents.

Student Resources: Internet

- CPM has additional activities that students can access. The publisher also provides a free subscription to HotMath. Problems are online and Hotmath gives students a step by step solution with prompting (the answer does not just pop up).
- Discovering Geometry provides explanations and activities for clarification.
- McDougal Littel provides additional support online in the form of games and activities.

St. Charles Top Performing School

- Test scores have increased by 11% since adopting the CPM model.



CPM Background

- CPM is a Not for Profit organization made up of classroom teachers. The company has only five non-teachers in their organization, and these are former teachers.

Exemplary Program

CPM was named an **Exemplary Mathematics Program** by the U.S. Department of Education in 1999. ... “there can be no doubt that CPM is one way to effectively teach mathematics. Students of all abilities learn the basic skills while they benefit from the added features of the program: understanding concepts, acquiring problem solving strategies, developing the ability to communicate ideas clearly and effectively, and learning to work with others.”

CPM Geometry Connections

- Through our research, support of best practices, and reviewing high performing schools, we feel that CPM Geometry Connections is the best choice for our students.

Public School Calendar

Proposed Public School Calendar 2009-2010 View Page

SESSION
TIMEOUT 59:42[| Enter Cal](#) | [View Cal](#) | [Aprv/Disapr Cal](#) | [Blank Cal](#) | [User Guide](#) | [Close Window](#)[Guidelines for School Calendar Preparation](#)**The Proposed Public School Calendar 2009-2010 document status is: Draft**[Go to one page calendar for printing](#)**Calendar Legend - Totals for the Year**[Go to one page legend for printing](#)

For 47-071-2230-26-0000 Meridian CUSD 223

| Calendar Code | Code Description | No. of Days | Totals |
|---------------|-------------------------------------|-------------|----------------------------|
| X | Pupil Attendance Day | 169 | |
| XHS | Half-Day School Improvement Program | 4 | |
| XH | Pupil Attendance Holiday Waiver | 2 | |
| XED | Emergency Day-Proposed | 5 | |
| | | | Total Attendance Days: 180 |
| FPT | Full-Day Parent/Teacher Conference | 1 | |
| TI | Teacher Institute/Workshop | 4 | |
| | | | Total Calendar Days: 185 |
| HOL | Holiday | 9 | |
| NIA | Not in Attendance | 15 | |

Calendar for 47-071-2230-26-0000 Meridian CUSD 223

Total Days of Attendance: 180

| July 2009 | | | | | | | August 2009 | | | | | | | September 2009 | | | | | | |
|-----------|-----|-----|-----|-----|----------|-----|-------------|---------|---------|---------|----------|-----|-----|----------------|---------|---------|---------|----------|-----|-----|
| Mon | Tue | Wed | Thu | Fri | Sat | Sun | Mon | Tue | Wed | Thu | Fri | Sat | Sun | Mon | Tue | Wed | Thu | Fri | Sat | Sun |
| 29 | 30 | 1 | 2 | 3 | 4 HOL | 5 | 27 | 28 | 29 | 30 | 31 | 1 | 2 | 31 | 1 X | 2 X | 3 X | 4 XHS | 5 | 6 |
| 6 | 7 | 8 | 9 | 10 | 11 | 12 | 3 | 4 | 5 | 6 | 7 | 8 | 9 | 7 HOL | 8 X | 9 X | 10 X | 11 X | 12 | 13 |
| 13 | 14 | 15 | 16 | 17 | 18 | 19 | 10 | 11 | 12 | 13 | 14 TI | 15 | 16 | 14 X | 15 X | 16 X | 17 X | 18 X | 19 | 20 |
| 20 | 21 | 22 | 23 | 24 | 25 | 26 | 17 TI | 18 X | 19 X | 20 X | 21 X | 22 | 23 | 21 X | 22 X | 23 X | 24 X | 25 X | 26 | 27 |
| 27 | 28 | 29 | 30 | 31 | 1 | 2 | 24 X | 25 X | 26 X | 27 X | 28 X | 29 | 30 | 28 X | 29 X | 30 X | 1 | 2 | 3 | 4 |
| 3 | 4 | 5 | 6 | 7 | 8 | 9 | 31 X | 1 | 2 | 3 | 4 | 5 | 6 | 5 | 6 | 7 | 8 | 9 | 10 | 11 |

July Atnd: 0 Accum: 0 Aug Atnd: 10 Accum: 10 Sept Atnd: 21 Accum: 31

| October 2009 | | | | | | | November 2009 | | | | | | | December 2009 | | | | | | |
|--------------|---------|---------|---------|----------|-----|-----|---------------|---------|-----------|-----------|-----------|-----|-----|---------------|-----------|-----------|-----------|-----------|-----|-----|
| Mon | Tue | Wed | Thu | Fri | Sat | Sun | Mon | Tue | Wed | Thu | Fri | Sat | Sun | Mon | Tue | Wed | Thu | Fri | Sat | Sun |
| 28 | 29 | 30 | 1 X | 2 XHS | 3 | 4 | 26 | 27 | 28 | 29 | 30 | 31 | 1 | 30 | 1 X | 2 X | 3 X | 4 X | 5 | 6 |
| 5 X | 6 X | 7 X | 8 X | 9 TI | 10 | 11 | 2 X | 3 X | 4 X | 5 X | 6 XHS | 7 | 8 | 7 X | 8 X | 9 X | 10 X | 11 X | 12 | 13 |
| 12 HOL | 13 X | 14 X | 15 X | 16 X | 17 | 18 | 9 X | 10 X | 11 HOL | 12 X | 13 X | 14 | 15 | 14 X | 15 X | 16 X | 17 X | 18 X | 19 | 20 |
| 19 X | 20 X | 21 X | 22 X | 23 X | 24 | 25 | 16 X | 17 X | 18 X | 19 X | 20 X | 21 | 22 | 21 NIA | 22 NIA | 23 NIA | 24 NIA | 25 HOL | 26 | 27 |
| 26 X | 27 X | 28 X | 29 X | 30 X | 31 | 1 | 23 X | 24 X | 25 FPT | 26 HOL | 27 NIA | 28 | 29 | 28 NIA | 29 NIA | 30 NIA | 31 NIA | 1 | 2 | 3 |
| 2 | 3 | 4 | 5 | 6 | 7 | 8 | 30 X | 1 | 2 | 3 | 4 | 5 | 6 | 4 | 5 | 6 | 7 | 8 | 9 | 10 |

Oct Atnd: 20 Accum: 51 Nov Atnd: 17 Accum: 68 Dec Atnd: 14 Accum: 82

| January 2010 | | | | | | | February 2010 | | | | | | | March 2010 | | | | | | |
|--------------|---------|---------|---------|----------|-----|-----|---------------|---------|---------|---------|----------|-----|-----|------------|-----------|-----------|---------|---------|-----|-----|
| Mon | Tue | Wed | Thu | Fri | Sat | Sun | Mon | Tue | Wed | Thu | Fri | Sat | Sun | Mon | Tue | Wed | Thu | Fri | Sat | Sun |
| 28 | 29 | 30 | 31 | 1 HOL | 2 | 3 | 25 | 26 | 27 | 28 | 29 | 30 | 31 | 22 | 23 | 24 | 25 | 26 | 27 | 28 |
| 4 X | 5 X | 6 X | 7 X | 8 X | 9 | 10 | 1 X | 2 X | 3 X | 4 X | 5 X | 6 | 7 | 1 XH | 2 X | 3 X | 4 X | 5 X | 6 | 7 |
| 11 X | 12 X | 13 X | 14 X | 15 TI | 16 | 17 | 8 X | 9 X | 10 X | 11 X | 12 XH | 13 | 14 | 8 X | 9 X | 10 X | 11 X | 12 X | 13 | 14 |
| 18 HOL | 19 X | 20 X | 21 X | 22 X | 23 | 24 | 15 NIA | 16 X | 17 X | 18 X | 19 X | 20 | 21 | 15 X | 16 X | 17 X | 18 X | 19 X | 20 | 21 |
| 25 X | 26 X | 27 X | 28 X | 29 X | 30 | 31 | 22 X | 23 X | 24 X | 25 X | 26 X | 27 | 28 | 22 X | 23 X | 24 X | 25 X | 26 X | 27 | 28 |
| 1 | 2 | 3 | 4 | 5 | 6 | 7 | 1 | 2 | 3 | 4 | 5 | 6 | 7 | 29 NIA | 30 NIA | 31 NIA | 1 | 2 | 3 | 4 |

Jan Atnd: 18 Accum: 100 Feb Atnd: 19 Accum: 119 Mar Atnd: 20 Accum: 139

| April 2010 | | | | | | | May 2010 | | | | | | | June 2010 | | | | | | |
|------------|---------|---------|----------|-----------|-----|-----|-----------|-----------|-----------|-----------|-----------|-----|-----|-----------|----------|-----|-----|-----|-----|-----|
| Mon | Tue | Wed | Thu | Fri | Sat | Sun | Mon | Tue | Wed | Thu | Fri | Sat | Sun | Mon | Tue | Wed | Thu | Fri | Sat | Sun |
| 29 | 30 | 31 | 1 NIA | 2 NIA | 3 | 4 | 26 | 27 | 28 | 29 | 30 | 1 | 2 | 31 | 1 XED | 2 | 3 | 4 | 5 | 6 |
| 5 X | 6 X | 7 X | 8 X | 9 X | 10 | 11 | 3 X | 4 X | 5 X | 6 X | 7 X | 8 | 9 | 7 | 8 | 9 | 10 | 11 | 12 | 13 |
| 12 X | 13 X | 14 X | 15 X | 16 X | 17 | 18 | 10 X | 11 X | 12 X | 13 X | 14 X | 15 | 16 | 14 | 15 | 16 | 17 | 18 | 19 | 20 |
| 19 X | 20 X | 21 X | 22 X | 23 XHS | 24 | 25 | 17 X | 18 X | 19 X | 20 X | 21 X | 22 | 23 | 21 | 22 | 23 | 24 | 25 | 26 | 27 |
| 26 X | 27 X | 28 X | 29 X | 30 X | 1 | 2 | 24 X | 25 XED | 26 XED | 27 XED | 28 XED | 29 | 30 | 28 | 29 | 30 | 1 | 2 | 3 | 4 |
| 3 | 4 | 5 | 6 | 7 | 8 | 9 | 31 HOL | 1 | 2 | 3 | 4 | 5 | 6 | 5 | 6 | 7 | 8 | 9 | 10 | 11 |

Apr Atnd: 20 Accum: 159 May Atnd: 20 Accum: 179 June Atnd: 1 Accum: 180

PT /In-Service/School Improv./Act of God/Interrupted Days/Delayed Start-Explanations

For 47-071-2230-26-0000 Meridian CUSD 223

School Begin Date: 08/14/2009 **School End Date:** 06/01/2010
Regular Day: 7:50AM - 2:20PM **Instruct. Day Lgth:** 5 Hrs. 44 Mins.

| Cal. Date | Cal. Code | Code Descr. | Student Attend. | Activity Time | Brief Explanation for Activity or School Closing |
|------------|-----------|-------------------------------------|-------------------|-------------------|---|
| 9/4/2009 | XHS | Half-Day School Improvement Program | 7:50AM 11:00AM | 11:00PM 2:30AM | The staff will work on scope, sequence and alignment for grades K-12 |
| 10/2/2009 | XHS | Half-Day School Improvement Program | 7:50AM 11:00AM | 11:00AM 2:30AM | District staff will work on scope, sequence and alignment of K-12 curriculum |
| 11/6/2009 | XHS | Half-Day School Improvement Program | 7:50AM 11:00AM | 11:00AM 2:30AM | District staff will work on scope, sequence and alignment of K-12 curriculum |
| 11/25/2009 | FPT | Full-Day Parent/Teacher Conference | | 5:30AM 8:30PM | Two evenings of parent teacher conferences will be held. PT day will allow parents and teachers to discuss student academic achievement |
| 4/23/2010 | XHS | Half-Day School Improvement Program | 7:50AM 11:00AM | 11:00AM 2:30PM | Staff will work on scope, sequence and alignment of k-12 curriculum |

Agenda Item 5: Report of the Superintendent

- 5.1 Review Community Focus Group Session scheduled for Thursday, April 13, 2009 at Stillman Valley High School for 7:00 p.m.

Agenda Item 8.1: Review/Approve SVHS Geometry Textbook Recommendation

Information/Background

This item is placed on the agenda for the School Board to hear and approve a presentation for the SVHS Geometry textbook. At the February 26, 2009 meeting, the three textbooks the mathematics department was considering were placed on display. The mathematics department needed additional time to evaluate the three textbooks that were under consideration.

Recommendation:

Agenda Item 8.2: Establish Date for School Board Organizational Meeting

Information/Background

Per policy, the School Board is required to establish a date at the March meeting to establish a date for the organizational meeting, which will be held following the consolidated election (April 7, 2009). The Board's two meetings in April are scheduled for April 9th and April 23rd. Because the Ogle and Winnebago County Clerks are unable to complete canvassing the election results by April 9th, it is recommended that the Board schedule the Organizational Meeting for April 23, 2009.

Recommendation

The Superintendent recommends scheduling the Board's Organizational Meeting for Thursday, April 23, 2009 at 7:00 p.m. at the Meridian Junior High School Board Room.

Agenda Item 8.3: Approve Meridian CUSD #223 Dashboard

Information/Background

At the February 12, 2009 meeting, the Meridian School Board reviewed a draft of the Meridian Dashboard, which included numerous items on the School District's instructional and operational programs. Over the past month, work has been done on creating graphics to reflect the data reports. Samples of the graphics will be presented at the meeting. During January, two Dashboard committee meetings were held to review and determine the data/reports to be included in the Dashboard. The Dashboard's purpose is to provide the School Board with a tool to monitor the School District's progress. When fully completed, the Dashboard items will be posted to the District's web page. The completion of the graphics and full dashboard is expected to be completed by the end of the current school year.

Recommendation

The Superintendent recommends approving the Dashboard data/reports and the graphics to reflect the data.

Meridian CUSD #223 Dashboard (Monitoring Instrument)

Student Learning

| Data/Report | Data Source | Provided By | Presented by | Frequency |
|--|------------------|---------------|--------------|-------------|
| ISAT | Pearson Testing | ISBE | Buildings | Annual |
| PSAE | ACT/ISBE | ISBE | Buildings | Annual |
| AIMSWeb | Pearson Testing | Pearson | Buildings | 3x per year |
| Workkeys | ACT | ACT | SVHS | Annual |
| Student Attendance | Skyward | District | Buildings | Monthly |
| Grade Point per Grade | Skyward | District | Buildings | Quarterly |
| Class Size | Skyward | District | Buildings | 3X per year |
| Professional Development | Skyward | District | District | Quarterly |
| Number of Students in AP | Skyward | District | SVHS | Annual |
| Staff Attendance | Skyward | District | District | Monthly |
| % of students with IEP | Skyward | District | District | Annual |
| SVHS Graduation Rate | ISBE/Report Card | ISBE | District | Annual |
| SVHS Dropout Rate | ISBE/Report Card | ISBE | District | Annual |
| Mobility Rate | ISBE/Skyward | ISBE/District | District | 3X per year |
| GPA/Test Comparison | ISBE/Skyward | District | Buildings | Annual |
| Extra-curricular Participation | Skyward | District | Buildings | Per Season |
| # Teacher Days out of classroom | Skyward | District | District | Monthly |
| College Acceptance | Survey | TBA | District | Annual |
| #/percentage of all students passing courses | Skyward | District | SVHS | Quarterly |

Customer Satisfaction

| Data/Report | Data Source | Provided By | Presented by | Frequency |
|---------------------------------------|---------------------|--------------------|---------------------|--------------------------|
| Discipline Report | Skyward | District | Buildings | Quarterly |
| Parent-Teacher Conf. | Local Documentation | Building | Buildings | After Conferences |
| Mass Phone Call | NTI Report | NTI | District | Monthly |
| Complaints | Local Documentation | District | District | Per occurrence/quarterly |
| Graduate Surveys (up to 5 years) | LifeTrack | LifeTrack | District | Annual |
| Parent Surveys | TB A | TBA | District | Annual |
| Bus Conduct Reports | Skyward | District | Buildings | Quarterly |
| Safety | Local Documentation | District | District | Quarterly |
| Students seen by Guidance | Local Documentation | Buildings | Buildings | Quarterly |
| Formal Complaints to outside agencies | District | District | District | Per Occurrence |
| Student Surveys | TBA | TBA | District | Annual |
| Suspensions/Expulsions | Skyward | District | District | At meeting and quarterly |

Resource Utilization

| Data/Report | Data Source | Provided By | Presented by | Frequency |
|----------------------------------|---------------------------------------|--------------------|---------------------|------------------|
| Quarterly Financial Report | Skyward | District | Business | Quarterly |
| Revenues/Expenditures | Skyward | District | Business | Quarterly |
| Fund Balance | Skyward | District | Business | Quarterly |
| Transportation Cost | Skyward | District | Business | Annual |
| B & G Cost | Skyward | District | Business | Annual |
| Insurance audit | Insurance Carrier | Carrier | District | Annual |
| Regional Office H/L/S inspection | Lee/Ogle Regional Office of Education | ROE | District | Annual |
| Community Use of Facilities | Local Documentations | Buildings | District | Quarterly |
| Volunteer Usage | Skyward | District | District | Quarterly |
| Technology Costs | Skyward | District | Business | Annual |
| Food Service Costs | Skyward | District | Business | Annual |
| Health Services | Skyward | District | Business | Annual |
| Safety Audit | Local Documentation | TBA | District | Annual |
| Enrollment Projection | TBA | TBA | District | Annual |
| Classroom Utilization | Skyward | District | District | Annual |

Agenda Item 8.4: Review Meridian CUSD Demographic and Student Growth Projections to 2020

Information/Background

In August of 2006, the Meridian School Board was presented a report detailing demographic and enrollment projections for the District through 2020. The report was completed in conjunction with a facility committee who was assigned the task of studying the District's facility needs. Due to the change of the local economy and smaller enrollment increases, the School Board is continuing to track student enrollment and corresponding facility needs for the District. The report was completed by Joel Cowen from the University Of Illinois School Of Medicine in Rockford. This agenda item provides the School Board to briefly review the updated enrollment projections.

Recommendation

This is an informational item. No Board action is required.

**MERIDIAN CUSD 223
DEMOGRAPHIC AND STUDENT
ENROLLMENT FACTORS WITH
PROJECTIONS TO 2020**

February 2009

Prepared for:
Meridian CUSD 223
207 West Main Street
Stillman Valley, Illinois 61084
815.645.2606

Prepared by:
Health Systems Research
University of Illinois College of Medicine at Rockford
1601 Parkview Avenue
Rockford, Illinois 61107
815.395.5639

TABLE OF CONTENTS

| | <u>Page</u> |
|--|-------------|
| EXECUTIVE SUMMARY | |
| Meridian Enrollment Projections | iv |
| I. INTRODUCTION AND METHODOLOGY | |
| Introduction | 1 |
| II. DEMOGRAPHIC CHARACTERISTICS OF MERIDIAN DISTRICT 223 | |
| 2000 Census Profile | 3 |
| Small Area (SAIPE) Estimates | 3 |
| 2010 Census | 4 |
| III. POPULATION GROWTH: 2000 - 2007 | |
| Census Estimates: July 1, 2005 - July 1, 2007 for Geographic Units | 8 |
| Davis Junction Special Census | 9 |
| Housing Growth: 2000 - 2008 | 10 |
| Birth and Natural Increase | 15 |
| Racial and Ethnic Change | 15 |
| Enrollment Trends | 18 |
| Enrollment in Private Schools | 19 |
| Graduation Rates | 19 |
| Growth Factors | 20 |
| Population Projections to 2020 | 21 |
| Student Enrollment Projection Results | 23 |

TABLES AND FIGURES

| <u>Table</u> | <u>Page</u> |
|---|-------------|
| 1 Profile Of Meridian District 223 Residents: 2000 Census | 6 |
| 2 Census Population Estimates: July 1, 2005, 2006, 2007 For Meridian School District 223 Components With Comparisons To April 1, 2000 | 8 |
| 3 Population And Change: 1970 - 2000 | 9 |
| 4 Davis Junction Special Census Counts | 9 |
| 5 New Housing Units In The Meridian District 223 Minor Civil Divisions: 2000 - 2008 . | 12 |
| 6 Proportion Of Estimated Population Within Meridian District 223 | 13 |

TABLE OF CONTENTS (cont'd.)

| <u>Table</u> | <u>Page</u> |
|--|-------------|
| 7 Estimated New Housing Units Within Meridian District 223: 2000 - 2008 | 13 |
| 8 Housing And Population Growth 2000 - 2008 Within Meridian District 223 | 14 |
| 9 Births, Deaths And Natural Increase: 2002 - 2006 Meridian School District 223 Minor Civil Divisions | 16 |
| 10 Population Percent By Race/Ethnicity In The Meridian School District 223 Minor Civil Divisions: 2000 | 17 |
| 11 Meridian School District 223 Racial/Ethnic Student Composition: 1999 - 2000 To 2008 - 2009 | 17 |
| 12 Student Enrollment Compared To Population Growth: 2000 - 2008 | 18 |
| 13 Enrollment: 2001 - 2002 To 2008 - 2009 Numerical and Percentage Change From Prior Years | 18 |
| 14 Public And Private School Enrollment Marion, Monroe And Scott Townships: 2000 | 19 |
| 15 Stillman Valley High School Graduation Rates: 2000 - 2008 | 20 |
| 16 Year By Year Assumed Population And Rates | 22 |
| 17 Total Projected Enrollment: 2009 - 2010 To 2019 - 2020 Meridian District 223 | 23 |
| 18 Annual Percentage Change In Enrollment: 2009 - 2010 To 2019 - 2020 Meridian District 223 | 23 |
| <u>Figure</u> | |
| 1 Meridian District 223 Boundaries | 5 |
| 2 Meridian School District Enrollment | 24 |

APPENDICES

| | | |
|-------------|-----------------------------|----|
| Appendix I | Projected Enrollment | 25 |
| Appendix II | Historical Enrollment | 29 |

EXECUTIVE SUMMARY MERIDIAN ENROLLMENT PROJECTIONS

Projecting student enrollment is an exercise in evaluating forces affecting District 223 in northeast Ogle County. The area has exhibited population growth that is among the fastest in the Rockford area. Until recently, new housing permits were being issued at a rapid pace. Some parents seek to “escape” from Rockford’s schools as suburbanization moves outward. However, the current recession and a sharp downturn in housing starts over the past year will mitigate these growth factors over the short run.

Thus, somewhat moderate growth is forecast into the future. These projections, of necessity, must rely on assumptions which could prove right or wrong, but at this time provide the “best guesses” on future population and enrollment.

An unexpectedly high kindergarten enrollment in Fall 2008 will have an impact throughout the projection period, offsetting the current housing slowdown.

Using Census and building permit information, the population of the District grew 22.4% from 7,088 in 2000 to an estimated 8,674 in 2005, but only to an estimated 9,305 in 2008 (7.3% over the last three years). District enrollment rose slightly less than population for both time periods - 20.1% for 2000 to 2005, and 5.4% from 2005 to 2008.

Projections are developed in this report by moving current classes forward, then adding new students moving into the area based on growth assumptions. Kindergarten enrollment is based on births five years earlier plus new movers in the 0 - 5 age group. The preschool population is growing faster than the overall population.

Health Systems Research projects that District 223 will grow from an enrollment of 1,944 in 2008-2009 to 2,187 in 2014 - 15, then reaching 2,398 in 2019 - 2020.

Suburbanization from the Rockford and Chicago areas could fuel even faster growth than projected. A Hispanic influx might also add more to the student population. However, an extended slowdown in housing starts or a long recession could dampen growth further, though area growth could also be renewed in the short run.

I. INTRODUCTION AND METHODOLOGY

Introduction

This study projects the student enrollment in the Meridian CUSD 223 to the year 2020 based on current knowledge of factors which affect population and enrollment. The District encompasses all of the Villages of Davis Junction, Monroe Center and Stillman Valley. Monroe Center was not incorporated until 2005. Also within the District are most of Marian, Monroe, and Scott Townships and a small portion of Pine Rock Township – all in Ogle County plus a small area of Rockford Township in Winnebago County.

This fast-growing District was home to an estimated 8,674 persons in 2005, up 22.4% from 7,156 in 2000, and 9,305 persons in 2008, up 7.3% from 2005. That population growth, its derivation and the potential impact on enrollment is the central focus of this report.

In order to project enrollment to 2020, the following factors have been considered.

1. Population growth including natural increase especially births, migration and racial/ethnic composition.
2. Rapid housing expansion followed by a drastic slowdown in 2008.
3. Recent enrollment experience.
4. Impact of the current recession.

This report utilizes varying geographies because data availability differs for variables and areas. When possible, school district data are utilized. However, such information is sparse. In some cases, estimates have been made for the school district based on the estimated population proportions of incorporated places and townships that lie within the District. Information is also sometimes presented for the major townships which make up the District.

The format of the study follows the following outline:

- | | |
|---|-----------------------------------|
| A. Estimating the 2005 - 2008 population | C. Projected Enrollment |
| 1. Census Estimates: 2005 - 2008 | 1. Growth Factors |
| 2. Housing Growth: 2000 - 2008 | 2. Population Projections to 2020 |
| 3. Births and Natural Increase: 2006 | 3. Methodology and Projections |
| B. Factors in Student Growth and Enrollment | |
| 1. Racial and Ethnic Change | |
| 2. Enrollment Trends | |
| 3. Enrollment in Private Schools | |
| 4. Graduation Rates | |

Initially, the discussion explores what has happened to area population since the 2000 Census by analyzing housing, births and deaths, plus looking at recent Census estimates and special censuses. Accurate population estimates are vital to the quality of the projections.

Next, factors are discussed and figures presented for those indicators which affect student enrollment. Lastly, enrollment is projected based on a series of assumptions and presented for possible use in planning future classes, services and facilities by the Meridian District. These projections are highly dependent on the incorporated assumptions.

II. DEMOGRAPHIC CHARACTERISTICS OF MERIDIAN DISTRICT 223:

2000 Census Profile

The National Center for Education Statistics (NCES) applied District boundaries to the 2000 Census to create a demographic profile for all school districts in the nation including CUSD 223. This profile is shown as Table 1. Comparisons to the nation have been added to help interpretation. These characteristics may affect the District and future enrollment, although the census variables provided by NCES are limited.

In 2000, District 223 contained 7,156 persons, split evenly by gender. Everyone lives in a household because no group quarters (nursing homes, dorms) are located in the District and 92.3% live in a family (two or more related persons living together). The District has far fewer female headed households (15.5%) than is true nationally.

Of the 2,490 occupied housing units which were located within the District in 2000, 86.4% were owner-occupied and 13.6% renter-occupied. The area contains far fewer renters than is true of the nation.

Though the median gross rent of \$544 was below the U.S. median in 2000, the median home value at that time, \$131,700 was higher than the nation.

College graduates, 18.3% of males and 19.2% of females, are slightly under national levels for persons 25+, though typical of the Rockford area.

The per capita income of \$22,603 for 1999 was higher than the nation, while poverty levels were quite low.

The District population is predominately white, non-Hispanic (96.4%) though minority presence was slightly higher for those under 18 than for the entire population living in the District.

Small Area (SAIPE) Estimates

The Census Bureau annually releases school district estimates for population and poverty. Population estimates are based primarily on county estimates.

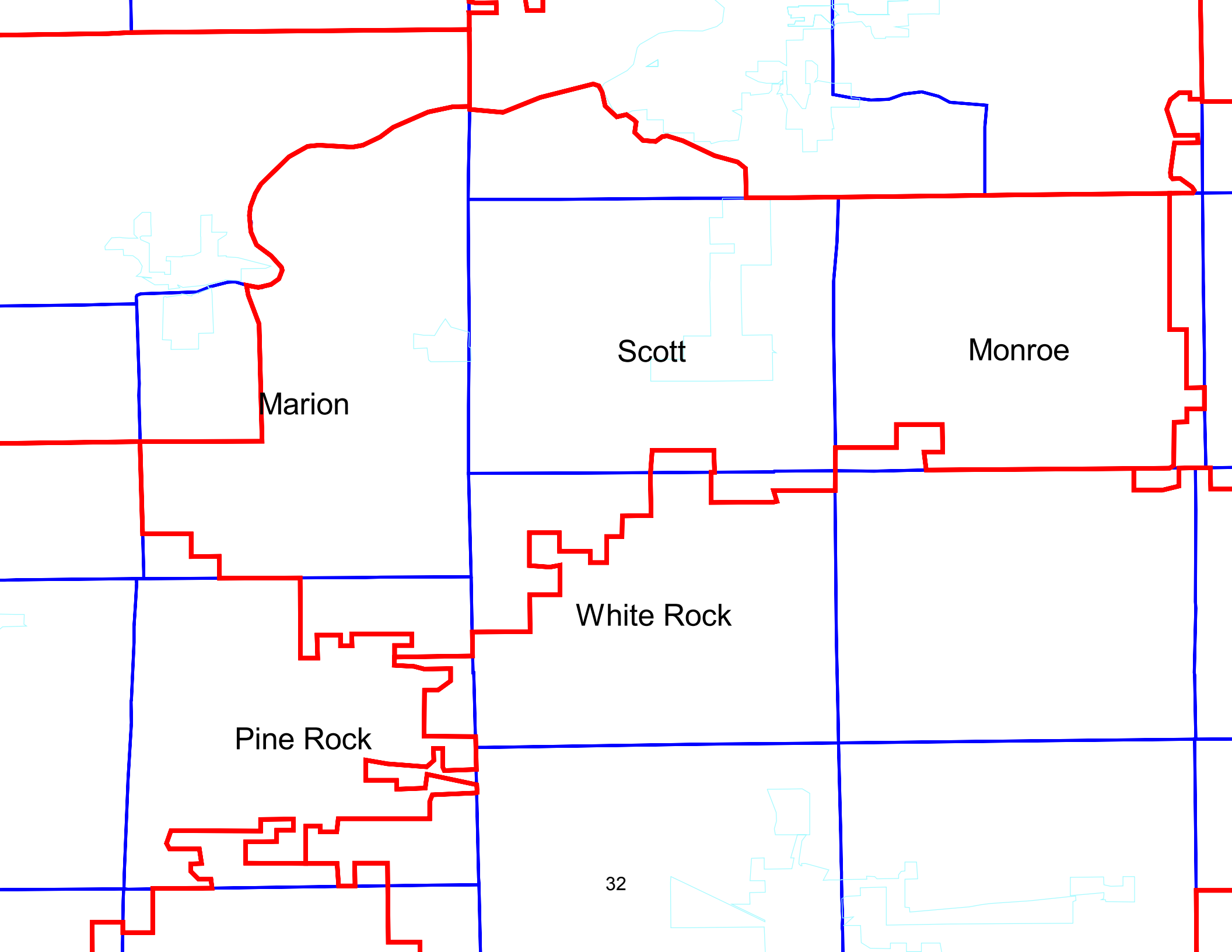
| <u>Year</u> | <u>District 223 Population</u> |
|-------------|------------------------------------|
| 2007 | 7,711 |
| 2006 | 7,691 |
| 2005 | 7,584 |
| 2000 | 7,244 |

We feel that those estimates are too low and do not fully reflect the area growth. The 6.4% growth for the 2000 - 2007 period is actually lower than the Ogle County estimated growth of 7.8% for 2000 - 2007. Since District 223 has grown rapidly, the SAIPE figures do not appear to accurately reflect the current population.

The 2007 estimate for poverty of children 5 - 17 in District 223 is 6.8%.

2010 Census

On April 10, 2010, the Census Bureau will be taking the decennial Census for the entire nation. Only household basics will be gained using the “short” form for everyone. The former “long form” for detailed socioeconomic information has been replaced by an annual sample survey, the American Community Survey. Though results have been released for areas with 20,000+ population, smaller areas like school districts will receive their first results in 2010, with data covering the 2005 - 2009 period.



Marion

Scott

Monroe

White Rock

Pine Rock

32

Table 1
 PROFILE OF MERIDIAN DISTRICT 223 RESIDENTS: 2000 CENSUS

| | District 223 | | U.S. Percent |
|--|--------------|---------|-----------------|
| | Number | Percent | |
| Population | 7,156 | 100.0% | 100.0% |
| GENDER AND AGE | | | |
| Male | 3,591 | 50.2% | 49.1% |
| Under 5 years | 244 | 6.8% | 7.1% |
| 5 to 9 years | 322 | 9.0% | 7.6% |
| 10 to 14 years | 346 | 9.6% | 7.6% |
| 15 to 17 years | 193 | 5.4% | 4.5% |
| 18 to 19 years | 95 | 2.6% | 3.0% |
| Female | 3,565 | 49.8% | 50.9% |
| Under 5 years | 239 | 6.7% | 6.5% |
| 5 to 9 years | 323 | 9.1% | 7.0% |
| 10 to 14 years | 357 | 10.0% | 7.0% |
| 15 to 17 years | 155 | 4.3% | 4.1% |
| 18 to 19 years | 73 | 2.0% | 2.8% |
| HOUSEHOLD TYPE | | | |
| Population in Households | 7,156 | 100.0% | 97.2% |
| In Family Households | 6,607 | 92.3% | 80.1% |
| Householder | 2,043 | 100.0% | 100.0% |
| Male | 1,727 | 84.5% | 63.9% |
| Female | 316 | 15.5% | 36.1% |
| TENURE | | | |
| Occupied Housing Units | 2,490 | 100.0% | 100.0% |
| Owner Occupied Housing Units | 2,151 | 86.4% | 66.2% |
| Renter Occupied Housing Units | 339 | 13.6% | 33.8% |
| AVERAGE HOUSEHOLD SIZE | | | |
| Average Household Size | 2.87 | | 2.59 |
| AVERAGE FAMILY SIZE | | | |
| Average Family Size | 3.19 | | 3.14 |
| GENDER BY EDUCATIONAL ATTAINMENT FOR THE POPULATION 25+ | | | |
| Total Aged 25+ | 4,450 | 100.0% | 100.0% |
| Male | 2,185 | 100.0% | 100.0% |
| Bachelor's degree or higher | 399 | 18.3% | 26.1% |
| Female | 2,265 | 100.0% | 100.0% |
| Bachelor's degree or higher | 434 | 19.2% | 22.8% |

PROFILE OF MERIDIAN DISTRICT 223 RESIDENTS: 2000 CENSUS (cont'd.)

| MEDIAN GROSS RENT (DOLLARS) | District 223 | | U.S. Percent |
|---|--------------|---------|-----------------|
| | Number | Percent | |
| Median Gross Rent | \$544 | | \$602 |
| MEDIAN VALUE (DOLLARS) FOR ALL OWNER-OCCUPIED HOUSING UNITS | | | |
| Median Value | \$131,700 | | \$119,600 |
| PER CAPITA INCOME IN 1999 (DOLLARS) | | | |
| Per Capita Income in 1999 | \$22,603 | | \$21,587 |
| POVERTY STATUS IN 1999 OF FAMILIES | | | |
| Total Families | 1,995 | 100.0% | 100.0% |
| Income in 1999 below poverty level | 60 | 3.0% | 9.2% |
| POVERTY STATUS IN 1999 OF HOUSEHOLDS | | | |
| Total households | 2,480 | 100.0% | 100.0% |
| Income in 1999 below poverty level | 115 | 4.6% | 11.8% |
| RACE | | | |
| Total | 7,156 | 100.0% | 100.0% |
| Hispanic or Latino | 156 | 2.2% | 12.5% |
| White alone | 6,897 | 96.4% | 79.0% |
| Black or African American alone | 26 | 0.4% | 13.8% |
| American Indian or Alaska Native alone | 18 | 0.3% | 0.8% |
| Asian alone | 20 | 0.3% | 4.1% |
| Native Hawaiian or other Pacific Islander alone | 4 | 0.1% | 0.1% |
| Other Race | 0 | 0.0% | 0.2% |
| Two or more races | 35 | 0.5% | 1.9% |
| RACE – POPULATION UNDER 18 | | | |
| Population under 18 | 2,179 | 100.0% | 100.0% |
| Hispanic or Latino | 70 | 3.2% | 17.1% |
| White alone | 2,062 | 94.6% | 60.9% |
| Black or African American alone | 11 | 0.5% | 14.7% |
| American Indian or Alaska Native alone | 7 | 0.3% | 0.9% |
| Asian alone | 6 | 0.3% | 3.3% |
| Native Hawaiian or other Pacific Islander alone | 2 | 0.1% | 0.2% |
| Other Race | 0 | 0.0% | 0.3% |
| Two or more races | 21 | 1.0% | 2.6% |

Source: Census Bureau
National Center for Educational Statistics

III. POPULATION GROWTH: 2000 - 2007

Census Estimates: July 1, 2005 - July 1, 2007 for Geographic Units

Subcounty estimates are released annually by the Census Bureau and include estimates for all Ogle County incorporated places and minor civil divisions (townships in Illinois). These are shown below in Table 2 along with population change since the 2000 Census. Though Monroe Center was not incorporated in 2000, the Census Bureau has estimated the population for that year as well as 2005.

Table 2
CENSUS POPULATION ESTIMATES: JULY 1, 2005, 2006, 2007
FOR MERIDIAN SCHOOL DISTRICT 223 COMPONENTS
WITH COMPARISONS TO APRIL 1, 2000

| Community | April 1, 2000 | July 1, 2005 ¹ | 2000-2005 Change | Percent Change 00 - 05 | July 1, 2006 | July 1, 2007 | 2005 - 2007 Change | Percent Change 05 - 07 |
|-------------------------|---------------|---------------------------|------------------|------------------------|--------------|--------------|--------------------|------------------------|
| Davis Junction | 491 | 1,849 | +1,358 | +276.6% | 1,988 | 2,130 | +281 | +15.2% |
| Monroe Center | 494 | 497 | +3 | +0.6% | 501 | 500 | +3 | +0.6% |
| Stillman Valley Village | 1,048 | 1,083 | +35 | +3.3% | 1,081 | 1,106 | +23 | +2.1% |
| Township ² | | | | | | | | |
| Marion | 3,671 | 3,919 | +248 | +6.8% | 3,937 | 3,976 | +57 | +1.5% |
| Monroe | 1,570 | 1,636 | +66 | +4.2% | 1,646 | 1,650 | +14 | +0.9% |
| Pine Rock | 979 | 1,038 | +59 | +6.0% | 1,044 | 1,049 | +11 | +1.1% |
| Scott | 1,671 | 2,392 | +721 | +43.1% | 2,788 | 2,935 | +543 | +22.7% |
| White Rock | 709 | 757 | +48 | +6.8% | 763 | 767 | +10 | 1.3% |

¹2005 Data for Davis Junction are from 2005 Special Census, other estimates are from U.S. Census Population Estimates.

²Township populations include incorporated areas within them.

District 223 also includes a portion of Rockford Township in Winnebago County.

Also shown in Table 3 on the following page are historical counts for each Census 1970 - 2000.

Subcounty Census estimates are based primarily on residential construction reports. When not reported, the number of permits are estimated by the Bureau based on county and state activity. Census place data show that reports are not currently received for Davis Junction, Monroe Center or Stillman Valley, so that Census estimates rely on other factors, especially county trends, which underestimate in most cases, but also may overestimate in "slow growth" areas. Ogle County does report to the Census Bureau for the unincorporated areas that they cover.

Without a basis for the level of new housing construction, the accuracy of Census estimates is very much in question since they rely primarily on countywide patterns. In the following section, Health

Systems Research estimates current populations for the area which are higher than the Census Bureau subcounty estimates. A major factor is the population of Davis Junction, shown by a Special Census to be much higher than the Census estimate. That Special Census population for Davis Junction had yet to be considered by the Census Bureau when July 1, 2005 estimates were released.

Based on Decennial Census data, the area grew from 1970 to 1980, lost 4.1% from 1980 to 1990, then began the substantial growth pattern during the decade of the 1990s.

Table 3
POPULATION AND CHANGE: 1970 - 2000¹

| Place | April 1, 2000 | April 1, 1990 | April 1, 1980 | April 1, 1970 |
|----------------------------|---------------|---------------|---------------|---------------|
| Marion Township | 3,671 | 2,740 | 2,793 | 2,144 |
| Monroe Township | 1,570 | 1,378 | 1,355 | 1,152 |
| Pine Rock Township | 979 | 883 | 1,002 | 937 |
| Scott Township | 1,671 | 1,418 | 1,414 | 936 |
| White Rock Township | 709 | 717 | 769 | 843 |
| Village of Stillman Valley | 1,048 | 848 | 961 | 871 |
| Village of Davis Junction | 491 | 246 | 289 | --- |
| Total | 10,139 | 8,230 | 8,583 | 6,883 |

¹Monroe Center was not incorporated until 2005.

Source: Census Bureau Decennial Census

Davis Junction Special Census

A Special Census was taken of the Village of Davis Junction as of August 31, 2005 with the counts issued in March 2006. Special Census counts were very different from prior census figures, revealing large gains in the Village.

Table 4
DAVIS JUNCTION
SPECIAL CENSUS COUNTS

| Indicator | Population | Housing Units |
|---|------------|---------------|
| August 31, 2005 | 1,849 | 643 |
| April 1, 2000 boundaries population 8/31/2005 | 1,347 | 447 |
| Annexed areas population 8/31/2005 | 502 | 196 |
| April 1, 2000 boundaries | | |
| Count on April 1, 2000 | 491 | 172 |
| Growth - "old areas" 2000 - 2005 | +856 | +471 |

The Special Census revealed a population count of 1,849. Of that number, 1,347 were living in the “old village” in 2000 while 502 resided in new areas annexed between 2000 and 2005. The “old village” grew by 856 between 2000 and 2005, moving from 491 to 1,347.

Housing Growth: 2000 - 2008

Since the Census is only taken decennially, estimates are needed in intercensal years by which to evaluate current population trends affecting school enrollment since Census Bureau estimates are not precise enough. Housing growth can be such a primary indicator of growth. Actual census counts are available for 2005 in Davis Junction which had a special census and in Monroe Center which incorporated.

School district boundaries are irregular and do not follow the boundaries of towns or townships. Health Systems Research has estimated the portion of each township population which lies within District 223 using maps and reconciling the 2000 District population from the Census to the estimates.

Health Systems Research worked with the incorporated villages and the Ogle County Department of Planning and Zoning to compile data on housing permits in the area since the 2000 Census, with information shown as Table 5.

Some cautions are necessary, however, in the use of housing permit data. Demolitions and conversions are not considered, although they are relatively rare in high growth areas like northeastern Ogle County. On occasion, permits are not carried out through the building and sales phases due to a variety of factors. Lastly, units must be translated into population through assumptions about the number of occupants. In this study, average family size is adopted since virtually all new construction is for single family homes.

Another potentially confounding factor can be a delay in building or sales well past when the permit is obtained. However, an off-setting factor is that permits issued earlier may only now be constructed and occupied. According to the Census Bureau, the average lag time from permit to construction is six months and the proportion of units which are never built after a permit is issued is only two percent.

In the case of Davis Junction, this report has chosen to use Census counts in 2000 and 2005 to establish new housing rather than the counts given by the Village. Units built in Scott Township have been assumed to be annexed into Davis Junction based on conversations with Ogle County Planning and Census data for the annexed area. The Census shows more new housing units from 2000 to 2005 than indicated by permits. The difference may be the result of new mobile homes which did not require a building permit.

Housing growth was extremely rapid across the area early in the decade, slowing greatly in the last year. For the 2000 - 2005 period, the fastest growing geographic unit was Davis Junction which added 471 new housing units, translating into an additional population of about 1,358 new residents. Next was Marion Township with 131 new housing units. For the 2006 - 2008 period, Davis Junction remains first in new housing units, but with just 124 units, greatly reduced from the prior period, with only seven new building permits issued in 2008.

When housing permits are tabulated for all the minor civil divisions of the school district, the entire area added 565 housing units in the 2000 - 2005 period, but 742 when the special Census count is used for 2005. For the 2006 - 2008 period permits issued dropped to 222 with only 29 permits issued in 2008.

Table 5
 NEW HOUSING UNITS IN THE MERIDIAN DISTRICT 223
 MINOR CIVIL DIVISIONS: 2000 - 2008

| Year | Davis Junction ² | Monroe Center | Stillman Valley | Marion Township | Monroe Township | Pine Rock Township | Scott Township | White Rock Township | Rockford Township | Total Area |
|-------------------|-----------------------------|---------------|-----------------|-----------------|-----------------|--------------------|----------------|---------------------|-------------------|------------|
| 2008 | 7 | 1 | 3 | 9 | 1 | 5 | 3 | 0 | 0 | 29 |
| 2007 | 50 | 0 | 3 | 16 | 5 | 2 | 1 | 4 | 1 | 82 |
| 2006 | 67 | 0 | 9 | 16 | 2 | 6 | 8 | 1 | 2 | 111 |
| 2005 | 90 | 2 | 8 | 21 | 7 | 11 | 4 | 3 | 0 | 146 |
| 2004 | 58 | 0 | 7 | 21 | 7 | 11 | 4 | 3 | 0 | 111 |
| 2003 | 53 | 1 | 4 | 14 | 5 | 5 | 9 | 1 | 1 | 93 |
| 2002 | 45 | 0 | 3 | 16 | 6 | 5 | 3 | 2 | 0 | 80 |
| 2001 | 27 | 1 | 4 | 33 | 2 | 3 | 1 | 2 | 1 | 74 |
| 2000 ¹ | 21 | 0 | 3 | 26 | 4 | 4 | 1 | 2 | 0 | 61 |
| Total 2000 - 2005 | 294 | 4 | 29 | 131 | 31 | 39 | 22 | 13 | 2 | 565 |
| Total 2006 - 2008 | 124 | 1 | 15 | 41 | 8 | 13 | 12 | 5 | 3 | 222 |
| Total 2000 - 2008 | 418 | 5 | 44 | 172 | 39 | 52 | 34 | 18 | 5 | 787 |

¹Three-quarters of 2000 building permits applied because Census was 4/1/2000.

²Building permits as reported by Davis Junction.

Table 6
PROPORTION OF ESTIMATED POPULATION WITHIN MERIDIAN DISTRICT 223

| | Davis Junction | Monroe Center | Stillman Valley | Marion Township | Monroe Township | Pine Rock Township | Scott Township | White Rock Township | Rockford Township |
|---------------------|----------------|---------------|-----------------|-----------------|-----------------|--------------------|----------------|---------------------|-------------------|
| Percent in District | 100% | 100% | 100% | 84% | 97% | 24% | 98% | 28% | 1% |

Table 7
ESTIMATED NEW HOUSING UNITS WITHIN MERIDIAN DISTRICT 223: 2000 - 2008

| Estimated within District 223 | Davis Junction ¹ | Monroe Center | Stillman Valley | Marion Township | Monroe Township | Pine Rock Township | Scott Township | White Rock Township | Rockford Township | Total |
|-------------------------------|-----------------------------|---------------|-----------------|-----------------|-----------------|--------------------|----------------|---------------------|-------------------|-------|
| 2000 - 2005 | 471 | 4 | 29 | 110 | 29 | 9 | 22 | 4 | 2 | 680 |
| 2006 - 2008 | 124 | 1 | 15 | 34 | 8 | 3 | 12 | 1 | 3 | 201 |
| Total | 595 | 5 | 44 | 144 | 37 | 12 | 34 | 5 | 5 | 881 |

¹Census data used.

Table 8
HOUSING AND POPULATION GROWTH 2000 - 2008
WITHIN MERIDIAN DISTRICT 223

| Indicator | Davis Junction ¹ | Monroe Center | Stillman Valley | Marion Township | Monroe Township | Pine Rock Township | Scott Township ² | White Rock Township | Rockford Township | Total Area |
|-----------------------|-----------------------------|---------------|-----------------|-----------------|-----------------|--------------------|-----------------------------|---------------------|-------------------|------------|
| Housing Units | | | | | | | | | | |
| 2000 Census | 172 | 182 | 417 | 751 | 571 | 75 | 429 | 83 | 197 | 2,877 |
| New 2000 - 2005 | 471 | 4 | 29 | 110 | 29 | 9 | (-110) | 4 | 2 | 548 |
| Total 2005 | 643 | 186 | 446 | 861 | 600 | 84 | 319 | 87 | 199 | 3,425 |
| New 2006 - 2008 | 124 | 1 | 15 | 34 | 8 | 3 | 12 | 1 | 3 | 201 |
| Total 2008 | 767 | 187 | 461 | 895 | 608 | 87 | 331 | 88 | 202 | 3,626 |
| Percent Change | | | | | | | | | | |
| 2000 - 2005 | +273.8% | +2.2% | +7.0% | +14.6% | +5.1% | +12.0% | -25.6% | +4.8% | +1.0% | +19.0% |
| 2005 - 2008 | +19.3% | +0.5% | +3.4% | +3.9% | +1.3% | +3.6% | +3.8% | +1.1% | +1.5% | +5.9% |
| Average Family Size | 3.14 | 2.68 | 3.14 | 3.19 | 3.10 | 3.01 | 3.26 | 3.08 | 2.63 | |
| Population | | | | | | | | | | |
| 2000 | 491 | 494 | 1,048 | 2,182 | 1,044 | 235 | 1,151 | 199 | 244 | 7,088 |
| 2005 | 1,849 | 505 | 1,139 | 2,533 | 1,134 | 262 | 792 | 211 | 249 | 8,674 |
| 2008 | 2,238 | 508 | 1,186 | 2,641 | 1,159 | 271 | 831 | 214 | 257 | 9,305 |
| Percent Change | | | | | | | | | | |
| 2000 - 2005 | +276.6% | +2.2% | +13.4% | +16.3% | +8.6% | +11.5% | -31.2% | +6.0% | +2.0% | 22.4% |
| 2006 - 2008 | +21.0% | +0.6% | +4.1% | +1.3% | +2.2% | +3.4% | +4.9% | +1.4% | +3.2% | +7.3% |

¹Census counts shown for Davis Junction.

²New 2002 - 2005 housing units adjust to annexations to Davis Junction.

Births and Natural Increase

Migration is one of the major demographic factors affecting the Meridian District. However, in addition to migration, growth also takes place through natural increase, the difference between births and deaths. In areas of rapid suburbanization, births would usually be expected to be a major growth contributor, while deaths would be fewer, because the population is relatively young. Vital statistics information is only available through 2006.

Estimates for the District are that 244 births and 123 deaths took place between 2002 and 2004 for a three-year natural increase of +121 and an annual natural increase of 40. With an estimated 2003 population of 8,353, the 244 births yield a birth rate of just 9.7 compared to 10.8 for Ogle County. However, birth rates in Davis Junction (26.5) and Stillman Valley (21.5) are very high, while the remaining rural area is an exceptionally low 4.2.

For the more recent 2005 - 2006 period, an estimated 187 births took place in the District. With an estimated 2006 population of 8,884 the 187 births yield a birth rate of 10.5. Birth rates in Davis Junction (26.3) and Stillman Valley (32.0) remain high. The District appears to continue to be a combination of high growth areas with elevated birth rates and older, rural, farming areas with few births.

Racial and Ethnic Change

The Hispanic population throughout northern Illinois is growing very rapidly and northeast Ogle County is sharing, to some extent, in this growth. An influx of Hispanic families is important demographically because the families are usually larger and younger due to higher fertility among Hispanic women, which can result in more school children than for the same number of non-Hispanic families.

The Hispanic population of Ogle County grew rapidly from 1,379 (3.0%) in the 1990 Census to 3,066 (6.0%) in the 2000 Census and to an estimated 4,473 (8.2%) Hispanics in 2005 - 2007 according to the Census Bureau's American Community Survey. Many reside in the Rochelle area. Some of this growth was evident in 2000 for the area as compared to 1990 as revealed in Table 10. Current race/ethnic estimates are not available for the population of the District but will be in 2010.

Table 9
 BIRTHS, DEATHS AND NATURAL INCREASE: 2002 - 2006
 MERIDIAN SCHOOL DISTRICT 223 MINOR CIVIL DIVISIONS

| Area | Births | Deaths | Natural Increase |
|-----------------------------------|--------|--------|------------------|
| Marion Township | | | |
| 2006 | 1 | 14 | -13 |
| 2005 | 5 | 16 | -11 |
| 2002 - 2004 | 9 | 31 | -22 |
| Monroe Township | | | |
| 2006 | 2 | 8 | -6 |
| 2005 | 4 | 9 | -5 |
| 2002 - 2004 | 45 | 26 | +19 |
| Pine Rock Township | | | |
| 2006 | 11 | 6 | +5 |
| 2005 | 7 | 11 | -4 |
| 2002 - 2004 | 22 | 23 | -1 |
| Scott Township | | | |
| 2006 | 4 | 3 | +1 |
| 2005 | 3 | 8 | -5 |
| 2002 - 2004 | 18 | 15 | +3 |
| White Rock Township | | | |
| 2006 | 4 | 5 | -1 |
| 2005 | 5 | 3 | +2 |
| 2002 - 2004 | 14 | 15 | -1 |
| Village of Stillman Valley | | | |
| 2006 | 37 | 14 | +23 |
| 2005 | 26 | 11 | +15 |
| 2002 - 2004 | 72 | 25 | +47 |
| Village of Davis Junction | | | |
| 2006 | 52 | 7 | +45 |
| 2005 | 37 | 10 | +27 |
| 2002 - 2004 | 93 | 22 | +71 |
| Monroe Center* | | | |
| 2006 | 10 | 2 | +8 |
| Total Area | | | |
| 2002 - 2004 | 273 | 157 | +116 |
| 2005 - 2006 | 208 | 127 | +81 |
| Estimate District 223 | | | |
| 2002 - 2004 | 244 | 123 | +121 |
| 2005 - 2006 | 187 | 102 | +85 |

*Became incorporated in 2006

Table 10
POPULATION PERCENT BY RACE/ETHNICITY
IN THE MERIDIAN SCHOOL DISTRICT 223 MINOR CIVIL DIVISIONS: 2000

| Race/Ethnic | | Davis Junction | Stillman Valley | Marion Township | Monroe Township | Pine Rock Township | Scott Township | White Rock Township |
|-------------|------|----------------|-----------------|-----------------|-----------------|--------------------|----------------|---------------------|
| White | 2000 | 483 | 1,019 | 3,600 | 1,554 | 962 | 1,586 | 692 |
| | 1990 | 245 | 843 | 2,724 | 1,373 | 883 | 1,407 | 715 |
| Hispanic | 2000 | 8 | 15 | 32 | 18 | 8 | 27 | 15 |
| | 1990 | 3 | 1 | 9 | 11 | 5 | 26 | 4 |
| Total | 2000 | 491 | 1,034 | 3,632 | 1,572 | 970 | 1,613 | 707 |
| | 1990 | 248 | 844 | 2,733 | 1,384 | 888 | 1,433 | 719 |

While northeast Ogle County historically has contained a small minority presence, some growth has been observed and Hispanic growth is inevitable given current demographic patterns including rapid expansion in nearby Rockford. Considerable Hispanic increase was seen from 1990 to 2000 along with some growth in the black population.

Differences in household size between Hispanic and non-Hispanic households is substantial. In Ogle County (2000), white, non-Hispanic households averaged 2.59 persons compared to 3.62 for Hispanic. In addition, Hispanic fertility is approximately double the white population.

Table 11
MERIDIAN SCHOOL DISTRICT 223
RACIAL/ETHNIC STUDENT COMPOSITION: 1999 - 2000 TO 2008 - 2009

| School Year | White | Black | Hispanic | Asian | Nat. Amer. | Multi. Racial ¹ |
|-------------|-------|-------|----------|-------|------------|----------------------------|
| 2008 - 2009 | 89.8% | 1.7% | 6.2% | 0.6% | 0.2% | 1.5% |
| 2007 - 2008 | 90.8% | 1.4% | 5.4% | 0.5% | 0.3% | 1.5% |
| 2006 - 2007 | 91.6% | 1.2% | 5.4% | 0.4% | 0.2% | 1.3% |
| 2005 - 2006 | 92.5% | 1.4% | 4.6% | 0.5% | 0.2% | 0.8% |
| 2004 - 2005 | 94.1% | 1.1% | 3.6% | 0.5% | 0.3% | 0.5% |
| 2003 - 2004 | 95.3% | 1.0% | 2.8% | 0.7% | 0.1% | |
| 2002 - 2003 | 95.8% | 1.0% | 2.4% | 0.7% | 0.1% | |
| 2001 - 2002 | 97.0% | 0.6% | 1.8% | 0.3% | 0.3% | |
| 2000 - 2001 | 97.5% | 0.6% | 1.5% | 0.3% | 0.1% | |
| 1999 - 2000 | 97.4% | 0.3% | 1.8% | 0.3% | 0.3% | |

¹Category added in 2004 - 2005.

Table 11 reveals that some racial/ethnic change is already evident in the Meridian school population from 1999 - 2000 to 2008 - 2009, with the District reaching a Hispanic enrollment of 4.6% in 2005 - 2006 and 6.2% in 2008 - 2009. In-migration of Hispanic families could be a factor in larger enrollment.

Enrollment Trends

Enrollment trends over the five years from 2000 to 2005 show that growth was substantial, moving from 1,536 in 2000 - 2001 to 1,845 in 2005 - 2006, a gain of 20.1% for the five-year period in the earlier enrollment projection report. However growth over the past three years has now slowed to 5.4%, averaging 12.7% over the most recent five years.

Table 12
STUDENT ENROLLMENT COMPARED
TO POPULATION GROWTH: 2000 - 2008

| Years | Student Enrollment | Population Growth |
|-------------|--------------------|-------------------|
| 2000 - 2005 | +20.1% | +22.4% |
| 2005 - 2008 | +5.4% | +7.3% |

The explanation for the difference between population and enrollment growth would appear to be that the preschool cohort is expanding faster than other age groups. This may mean that enrollment could continue to grow even when housing growth slows down. The large kindergarten entry in 2008 may be such a result.

Table 13
ENROLLMENT: 2001 - 2002 TO 2008 - 2009
NUMERICAL AND PERCENTAGE CHANGE FROM PRIOR YEARS

| Year | Meridian District 223 | |
|-------------------|-----------------------------------|---------------------------------|
| | Numerical Change from Prior Years | Percent Change from Prior Years |
| 2008 - 2009 | +46 | +2.4% |
| 2007 - 2008 | -3 | -0.2% |
| 2006 - 2007 | +56 | +3.0% |
| 2005 - 2006 | +91 | +5.2% |
| 2004 - 2005 | +29 | +1.7% |
| 2003 - 2004 | +76 | +4.6% |
| 2002 - 2003 | +81 | +5.2% |
| 2001 - 2002 | +32 | +2.1% |
| Five Year Period | +309 | +18.8% |
| Annual Average | +62 | +3.8% |
| Eight Year Period | +408 | +24.0% |
| Annual Average | +51 | +3.0% |

Enrollment in Private Schools

In analyzing and projecting enrollment for public school districts, the level of private school enrollment should also be considered. The only residentially-based data differentiating public and private enrollment come from 2000 Census sample data. Information on public vs. private enrollment for the three major Meridian townships for 2000 is shown below in Table 14.

Table 14
PUBLIC AND PRIVATE SCHOOL ENROLLMENT
MARION, MONROE AND SCOTT TOWNSHIPS: 2000

| Grade(s) | Public | Private | Total | Percent Public |
|--------------|--------|---------|-------|----------------|
| Kindergarten | 105 | 9 | 114 | 92.1% |
| 1 - 4 | 593 | 13 | 606 | 97.9% |
| 5 - 8 | 492 | 10 | 502 | 98.0% |
| 9 - 12 | 440 | 2 | 442 | 99.5% |
| Total | 1,630 | 34 | 1,664 | 98.0% |

Source: 2000 Census of Population and Housing

Census data reveal that very few students in the three township areas attend a private school. Residents and movers into the area appear to desire to attend Meridian schools, such that private schools are hardly a factor to be considered in enrollment projections.

Graduation Rates

Another variable to be factored into high school enrollment is dropouts. Until recently, students were required by state law to stay in school only until their 16th birthday.

At Meridian, the graduation rate was improving, moving from a low of 86% for 2001 graduates until 100% graduated in 2005, but the rate has since dropped to 90.3% in 2008, with a nine year average of 92% and a five year average of 95%.

Passed and signed in 2004, S.B. 2918 gives parents and schools an added year to keep students in the classroom by raising the legally required attendance age to 17. At this time, the impact of the new law is not known. In this report the average 92% graduation rate has been used to calculate the enrollment loss for a given cohort and the loss has been split between the 11th and 12th entries. Increased minority enrollment may have some effect on graduation rates. For FY 2008, the overall rate for Meridian was 90.3%; for white students: 91.0%; black: 66.7%, Hispanic: 75.7%, Asian: 100%; Native American: 100%.

Table 15
 STILLMAN VALLEY HIGH SCHOOL
 GRADUATION RATES: 2000 - 2008

| Year | Graduation Rate |
|------|-----------------|
| 2008 | 90.3% |
| 2007 | 91.7% |
| 2006 | 96.9% |
| 2005 | 100.0% |
| 2004 | 95.9% |
| 2003 | 91.3% |
| 2002 | 89.5% |
| 2001 | 86.0% |
| 2000 | 89.9% |

Growth Factors

Projecting population into the future is guesswork based on known factors, historical information and future trends using the best possible knowledge.

Population tends to move in waves. Currently, and for the past two decades, the population in the area has been moving outward from Rockford in all directions. Not only is the suburbanization of the area fueled by the pattern of growth outward from Rockford, but strengthened by at least two other factors.

One factor is concern of parents about the Rockford Schools. For more than a decade, District 205 has grappled with integration issues and declining test scores. A federal court order, which ended in 2002, raised property taxes to near the nation's highest in order to fund remedies. Though court controls have ended, funding and performance issues remain. To seek relief, some parents look to areas beyond District 205. With good test scores and an attractive socioeconomic profile, the Meridian District has become one choice for those looking for an alternative educational experience for their child or children.

Another growth force is the movement outward from Chicago including expansion of the northwest suburbs. A significant housing price gradient exists from the northwest suburbs to Rockford, meaning that families may choose to locate in the Rockford area and seek employment locally or commute to Chicago or other nearby areas via the interstates.

One element thought to be fueling growth until recently has been low interest rates which ease the home ownership burden for families. However, more recently, although interest rates remain low, tighter credit, a recession and a resultant downturn in housing starts have all made considering a new home more difficult for families.

Monroe Center could emerge as a growth node much like has occurred with Davis Junction recently. Located in a strategic spot just off I-39 and literally minutes from Rockford, the area may become attractive to developers. Incorporation may better prepare the Village for growth.

Population Projections to 2020

To project growth, population estimates have been developed for the 2000 - 2008 period relying primarily on housing permits within each district with population growth estimated based on household size in the 2000 Census. The Davis Junction 2005 Special Census has also been taken into consideration.

Projections for 2010, 2015 and 2020 reflect expected slower growth through the period due to both expected and extraordinary circumstances. Growth usually takes place in a logistic (S) curve as the population base becomes larger. Thus, while the second half of the current decade and the next decade were expected to experience slower growth going from 4.5% to 3.1% over the period, new estimates include the unexpected drop in housing starts as a result of the recession to lower short term growth estimates to 1.7% for 2009 - 2010, rising slowly from 2.4% from 2010 - 2015 to 3.0% for 2017 - 2020. These assumptions are shown in the population growth rates in Table 16 on the next page. Annual population growth has been projected to 2019 - 2020.

Starting with the actual 2008 - 2009 classes based on data provided by the District, migration has been added annually based on the assumed population growth rates shown in Table 16.

Kindergarten classes are brought into the analysis based on actual births or estimated births calculated from projected birth rates. Kindergarten class sizes are also increased by in-migration, but at a higher rate than the overall population rate. Like the overall population growth, the 0 - 5 growth rate is projected to decline, though the birth rate is slated to increase slowly from the very low current overall District level.

Table 16
YEAR BY YEAR ASSUMED POPULATION AND RATES

| Year | Births | Birth Rate | Population | 0 - 5 Growth | Population Growth |
|-------------|--------|------------|------------|--------------|-------------------|
| 2000 - 2001 | 75 | 10.6 | 7,088 | 12.0% | 4.5% |
| 2001 | 81 | 10.9 | 7,405 | 12.0% | 4.5% |
| 2002 | 87 | 11.3 | 7,722 | 12.0% | 4.5% |
| 2003 | 79 | 9.8 | 8,039 | 12.0% | 4.5% |
| 2004 - 2005 | 78 | 9.3 | 8,356 | 10.5% | 4.5% |
| 2005 | 77 | 8.9 | 8,674 | 9.0% | 4.5% |
| 2006 | 110 | 12.2 | 8,993 | 9.0% | 3.7% |
| 2007 | 118 | 12.8 | 9,229 | 9.0% | 2.6% |
| 2008 | 127 | 13.6 | 9,305 | 9.0% | 0.8% |
| 2009 - 2010 | 117 | 12.4 | 9,463 | 7.5% | 1.7% |
| 2010 | 116 | 12.0 | 9,690 | 5.0% | 2.4% |
| 2011 | 119 | 12.0 | 9,923 | 5.0% | 2.4% |
| 2012 | 122 | 12.0 | 10,161 | 5.0% | 2.4% |
| 2013 | 125 | 12.0 | 10,405 | 5.0% | 2.4% |
| 2014 - 2015 | 128 | 12.0 | 10,655 | 5.0% | 2.4% |
| 2015 | 131 | 12.0 | 10,953 | 4.5% | 2.8% |
| 2016 | | | 11,260 | 4.5% | 2.8% |
| 2017 | | | 11,598 | 4.5% | 3.0% |
| 2018 | | | 11,946 | 4.5% | 3.0% |
| 2019 - 2020 | | | 12,304 | 4.5% | 3.0% |

Student Enrollment Projection Results

Appendix I contains enrollment projections based on the assumptions discussed which have been developed using the best available demographic data. Total enrollment is shown below for the District by individual year through 2014 - 2015 and in five year increments thereafter. Pre-K is not considered. Given the extraordinary economic uncertainties occurring at this time, projections further into the future are not warranted.

Table 17
TOTAL ENROLLMENT: 2008 - 2009 TO 2019 - 2020
MERIDIAN DISTRICT 223

| Year | Enrollment |
|-------------|------------|
| 2008 - 2009 | 1,944 |
| 2009 - 2010 | 1,955 |
| 2010 - 2011 | 1,962 |
| 2011 - 2012 | 2,028 |
| 2012 - 2013 | 2,072 |
| 2013 - 2014 | 2,141 |
| 2014 - 2015 | 2,187 |
| 2019 - 2020 | 2,398 |

Table 18
ANNUAL PERCENTAGE CHANGE IN ENROLLMENT: 2009 - 2010 TO 2019 - 2020
MERIDIAN DISTRICT 223

| Year | Enrollment |
|-------------|------------|
| 2009 - 2010 | 0.6% |
| 2010 - 2011 | 0.4% |
| 2011 - 2012 | 3.4% |
| 2012 -2013 | 2.2% |
| 2013 - 2014 | 3.3% |
| 2014 - 2015 | 2.1% |
| 2019 - 2020 | 2.2% |

Over the next five years (2008 - 2013), the District is projected to grow by 10.1%, slightly lower than the last five year (2003 - 2008) rate of 12.7%, but still substantial.

